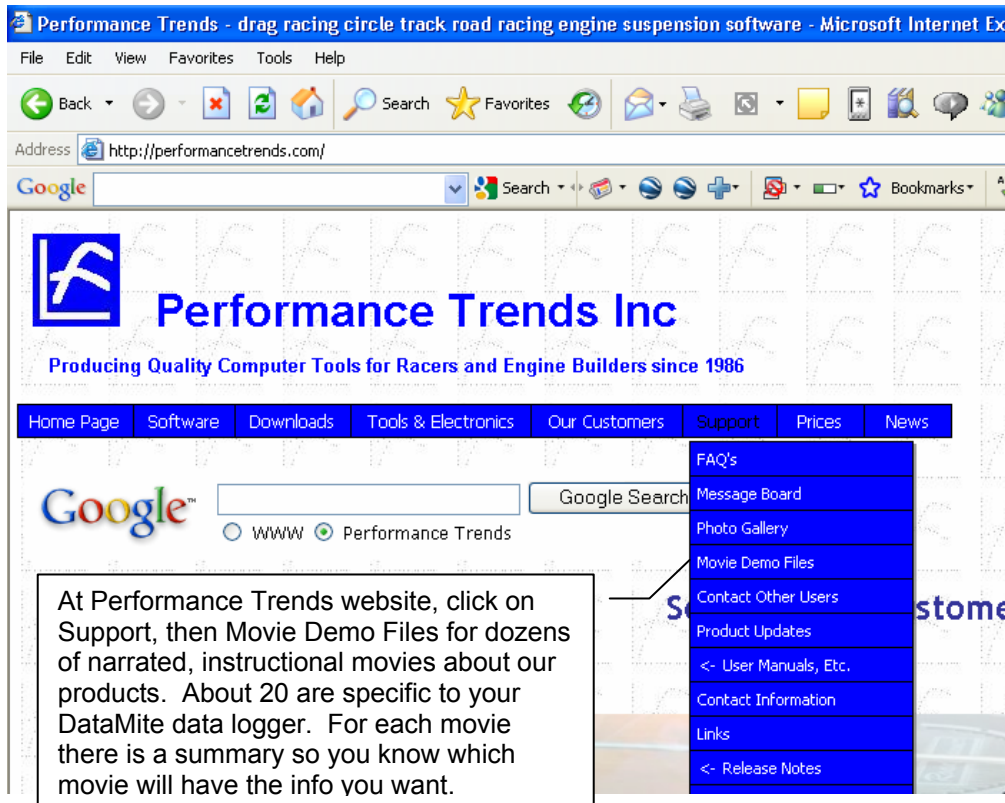
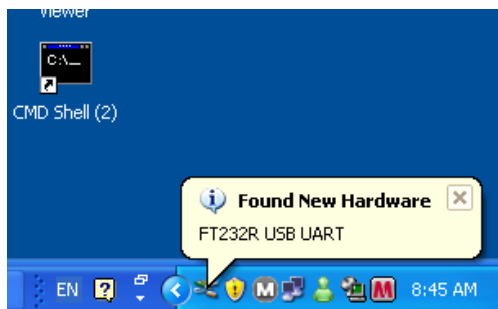


The [www.performancetrends.com](http://www.performancetrends.com) website has good info for learning about your DataMite data logger.



We strongly recommend you check out these movies, as they illustrate most of the important points about how install your DataMite hardware and run your DataMite software.

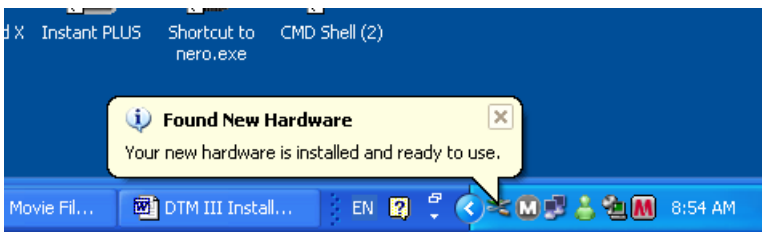
Hook up the USB cable from your USB logger to the computer, and a Found New Hardware message should appear, as shown below, with the USB connect tone. You should also see a "USB communicating" LED light on the box.



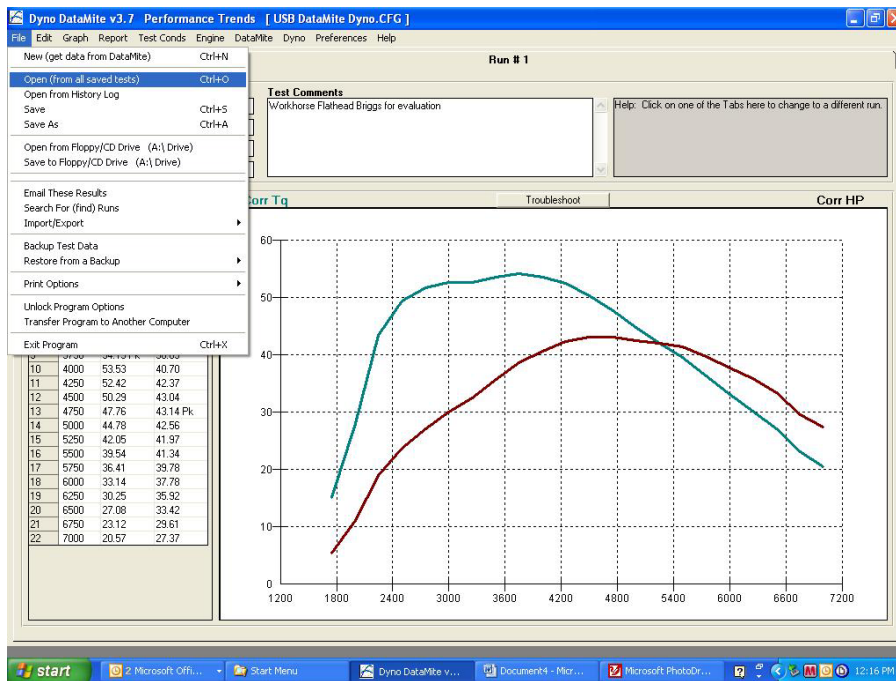
Then your computer should start the Found New Hardware Wizard, shown below. This is where you should put the Performance Trends blue CD back into your computer and follow the program instructions. (If the Installation Wizard starts up, just click on Stop in lower left corner to shut it down. Then the Found New Hardware Wizard should resume installing the USB drivers for the DataMite.)



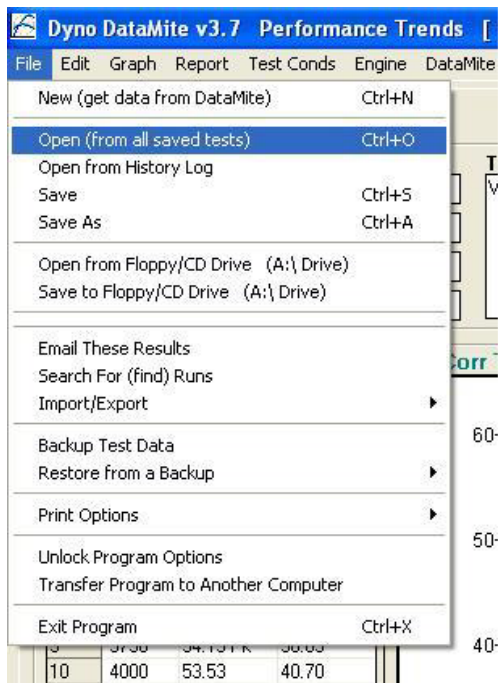
When you are finished with the Found New Hardware Wizard, you should get a message saying your hardware is installed and ready to use, as shown below.



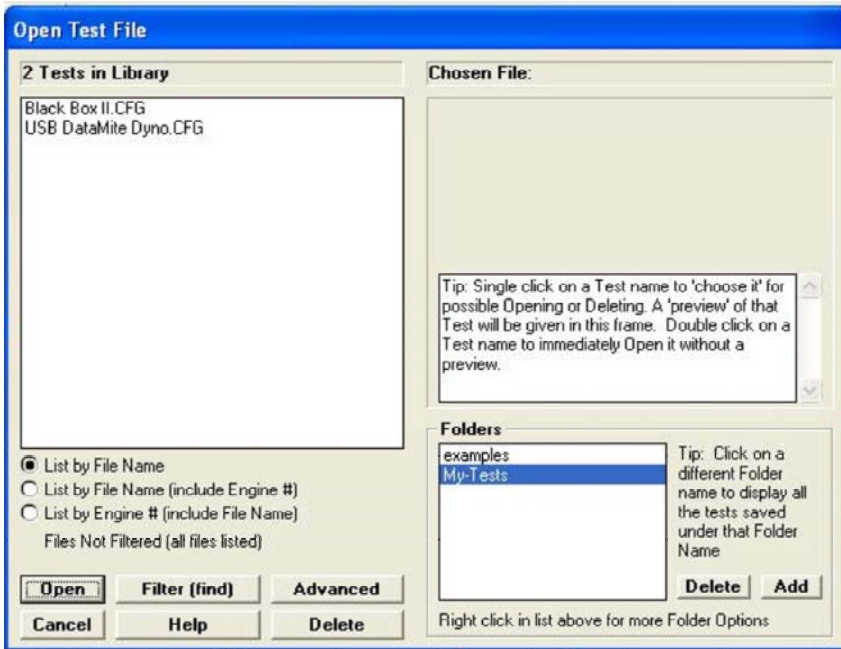
Once you have installed the program and connected the DataMite system to your computer, you must open the correct Example Test file that matches your DataMite to get the system started.



In the program go to File, Open (from all saved tests)

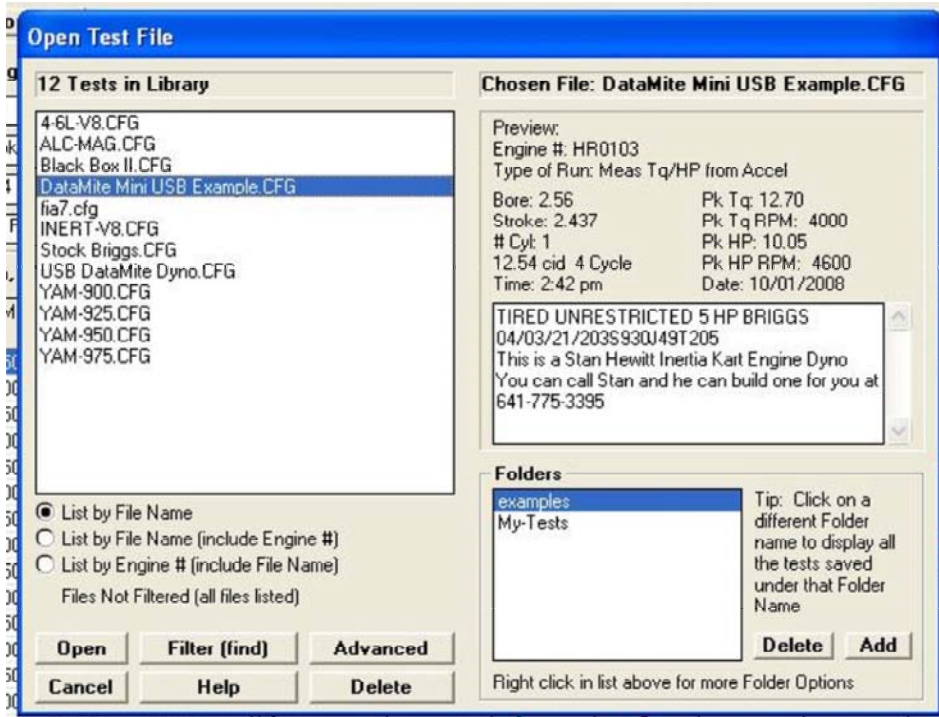


The Open Test File screen will appear.

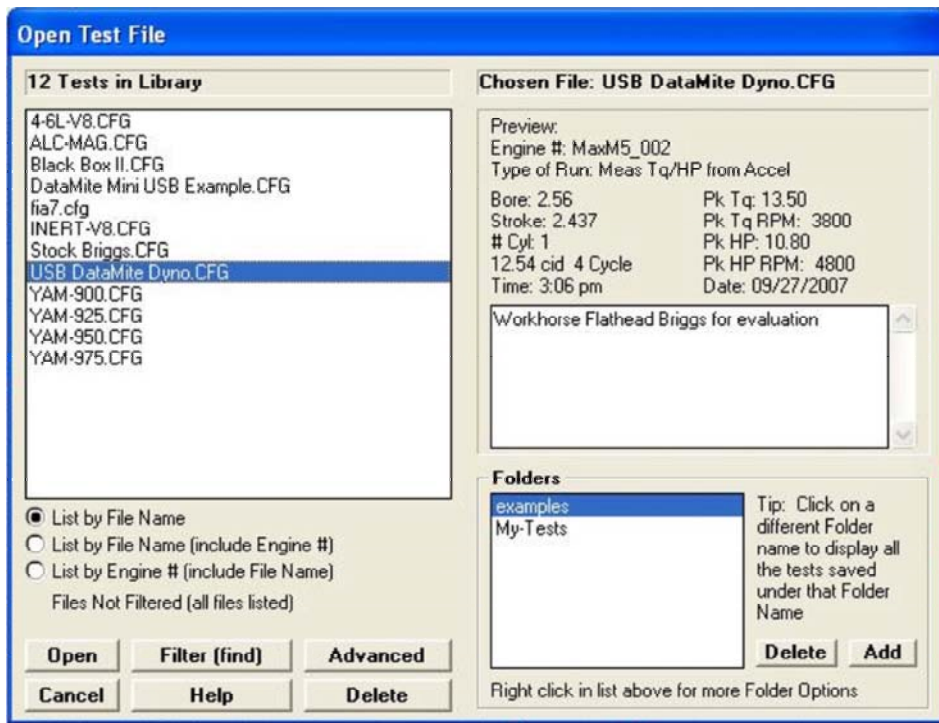


You may need to change the Folders selection in the lower right from My-Tests to examples.

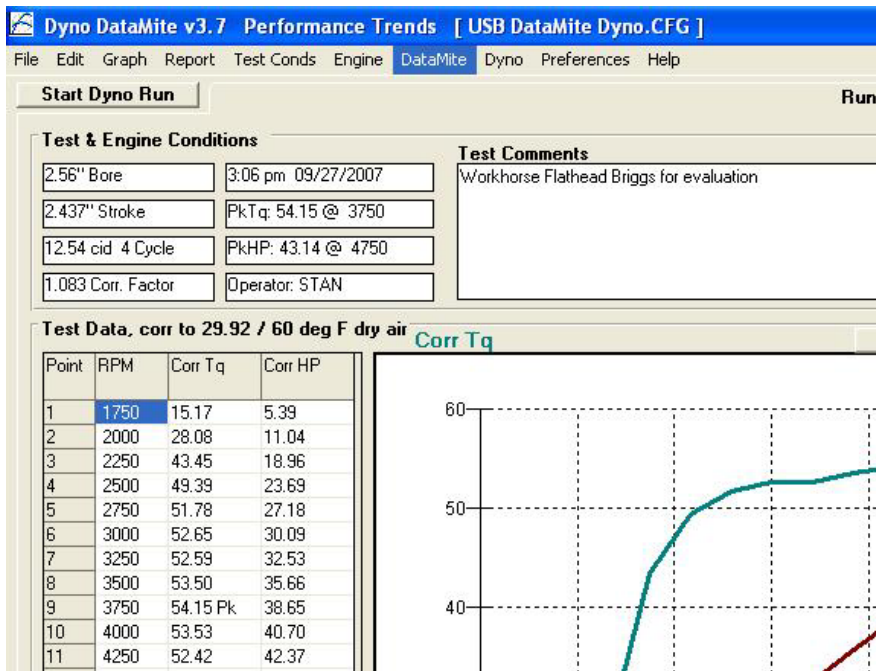




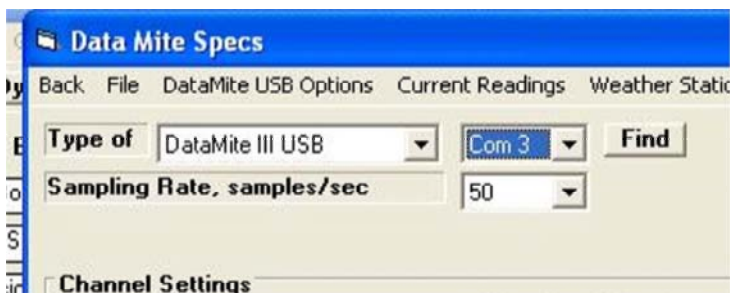
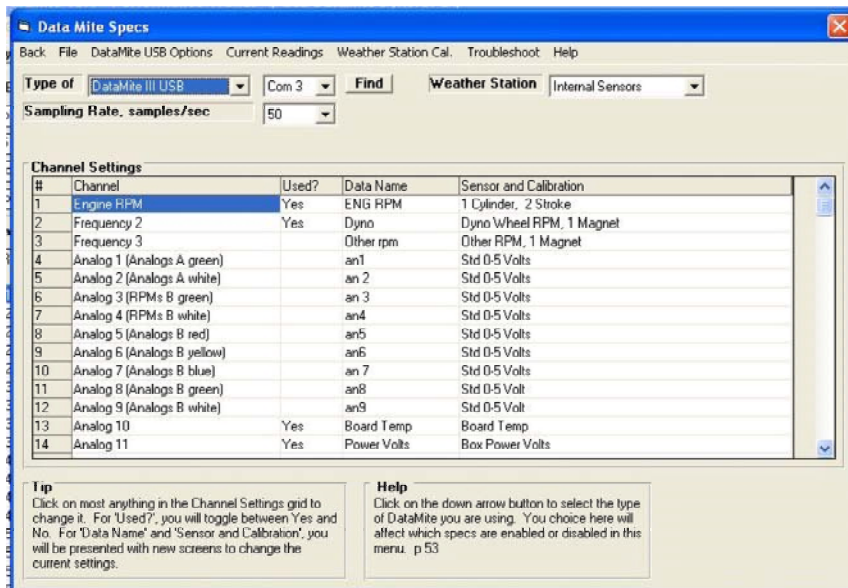
For the Datamite Mini system choose, “Datamite Mini USB Example CFG”.



If you are using the DataMite III choose “USB DataMite Dyno CFG”



Now we must configure the Datamite box to the computer. On the top of the screen choose "DataMite"



On the top of the Data Mite Specs screen you will see a "Find" button. Select the "Find" button to see what com ports are available.

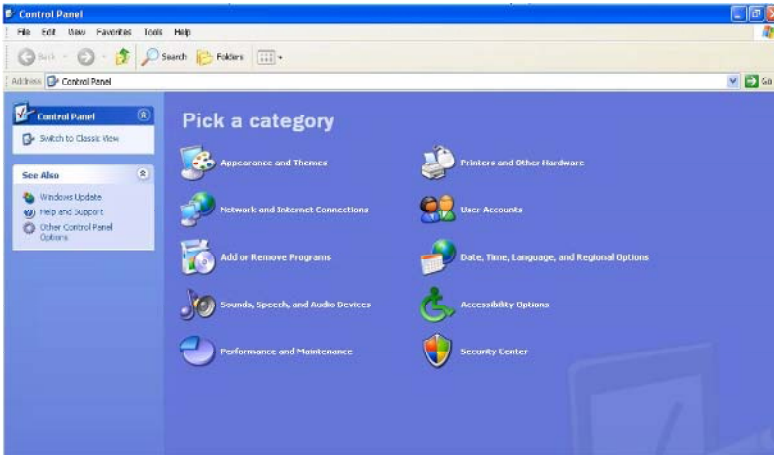




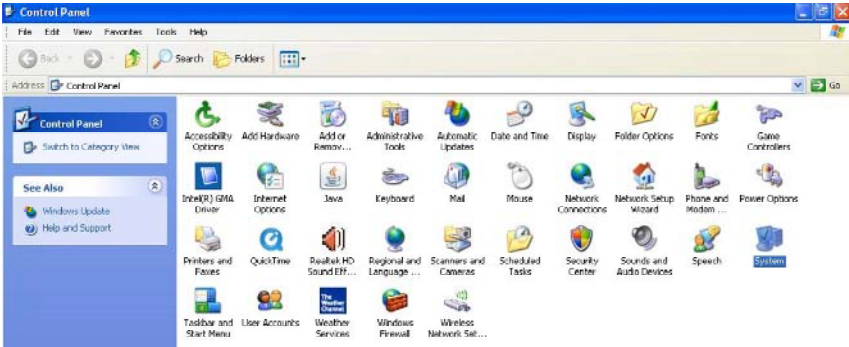
Now that we know what Com ports are available we can test them by selecting the available com ports in the pull down menu to see which one will work. Normally, your DataMite is the highest number you see suggested. Also, Com Port #3 is somewhat special, and can cause problems if that is the one your DataMite has been assigned to.



It may be necessary to manually figure out what com port the system will work on. In the lower left hand corner of your screen click on "Start" and then choose "Control Panel"



If your screen looks like the image above you will need to select “Switch to Classic View”

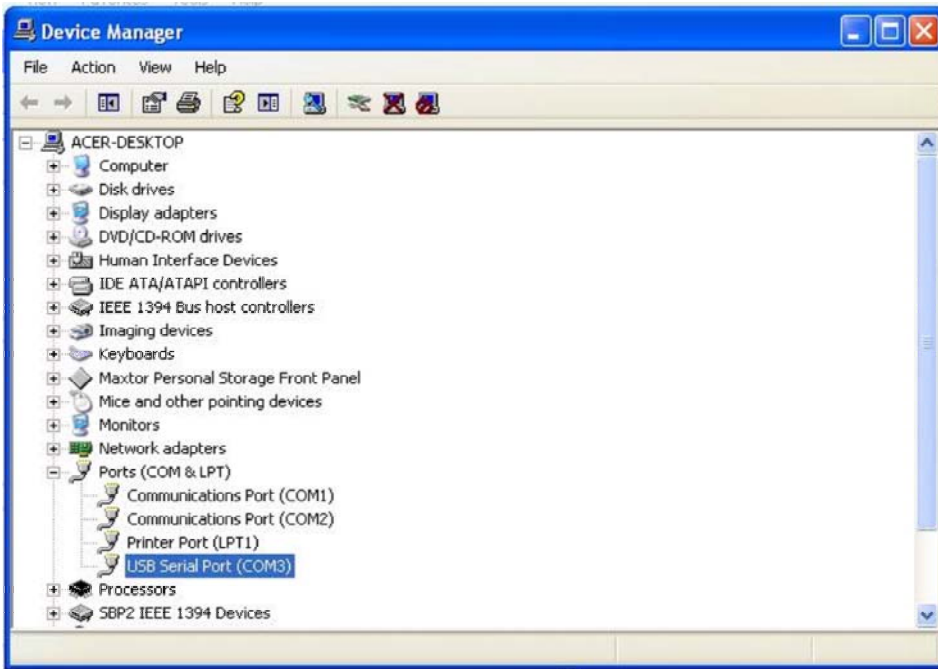


Once you see the screen above, select “System”





Once the “System Properties” window comes up, select “Hardware” on the top of the window and then choose “Device Manager”



When the Device Manager window comes up, click on “Ports (COM & LPT)”. Then you should see “USB Serial Port (COMX) where X is the Com Port number you should put in the COM Port number in the “Data Mite Specs”

