

Importing a Lobe into an existing Cam File

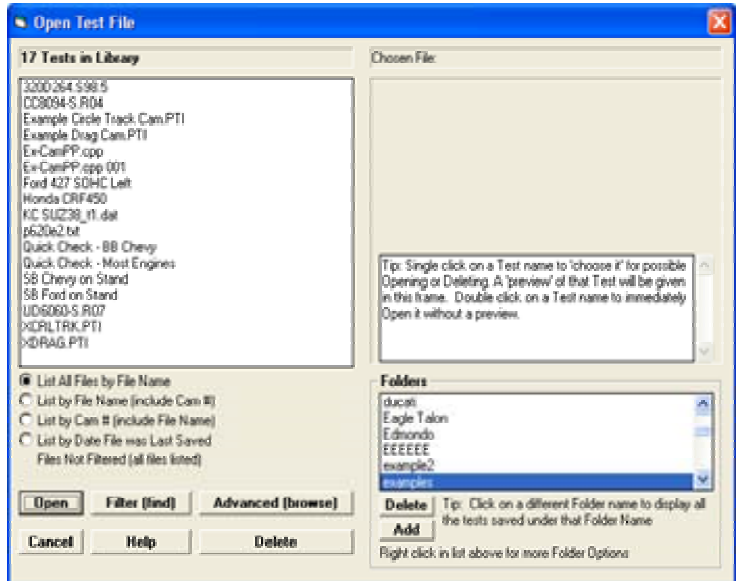
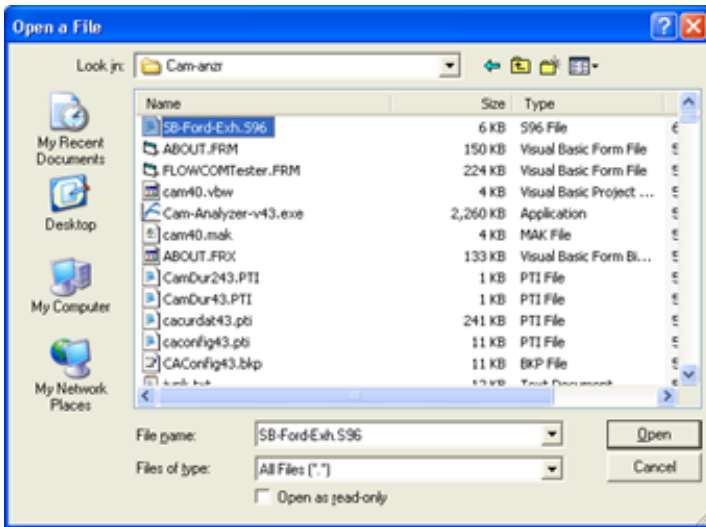
First, open the file you want to export over to an existing file, a small block Ford in this example. Click on File, then Export as Cam Dr File (and other formats). You will obtain the "Export File Options" screen as shown below. The S96 format is very simple and works well for moving 1 lobe to a different file.

The screenshot shows the 'Export File Options' dialog box in the Cam Analyzer software. The dialog is titled 'Export File Options' and has a 'Cam File Specs' section. It includes fields for 'Format' (set to 'S96 format'), 'File Name' (SB-FordEx), 'File Destination Path' (C:\WB98\projects\6\Cam-anz), 'Include .MSU and .DES Files' (Yes), 'Lobe to Use' (Lobe 1), and 'Do Extra Smoothing' (None). A 'Note' section explains that the Cam Dr or Comp Cams file is based on current cam measurements and that a Cam Dr file is created from an Int and Exh lobe. Buttons for 'Make File', 'Help', 'Cancel', and 'Print' are at the bottom.

Now open the file you want to import this lobe into, a file with just 1 intake and 1 exhaust lobe, called "Quick Check - Most Engines". Keeping things simple like this makes it easier to understand what is happening in this example.

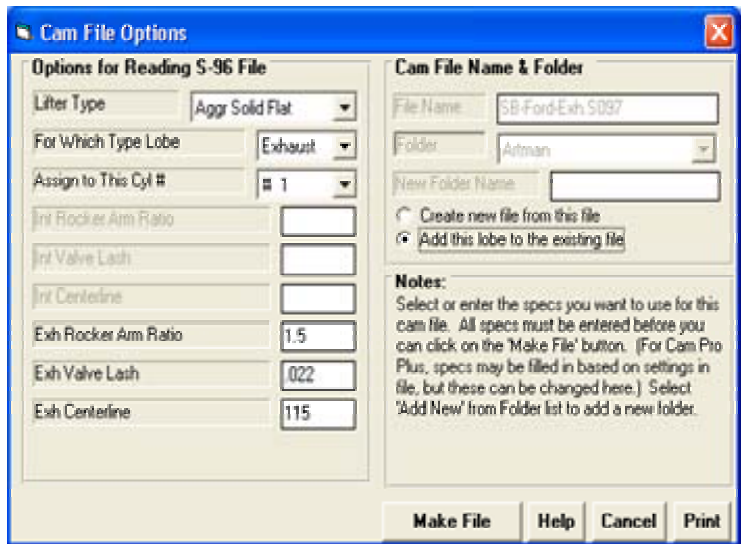
The screenshot shows the 'Lift measured by Actual Follower' graph in the Cam Analyzer software. The graph displays two lobes: a grey intake lobe and a blue exhaust lobe. The x-axis is labeled 'Crank' and ranges from 0 to 360 degrees. The y-axis is labeled 'Lift' and ranges from -0.1 to 0.4. Below the graph is a cam diagram showing the sequence of lobes: J1, Intake, Exhaust, J2, and Exhaust.

Now click on File, then Open (from all saved tests) to obtain the screen below. Since your exported S96 file was saved in a different location than the standard Cam Analyzer Files (in the CamData folder), click the “Advanced (browse)” button and find the S96 file. Click on it (SB-Ford-Exh.S96) and click open at the lower right.



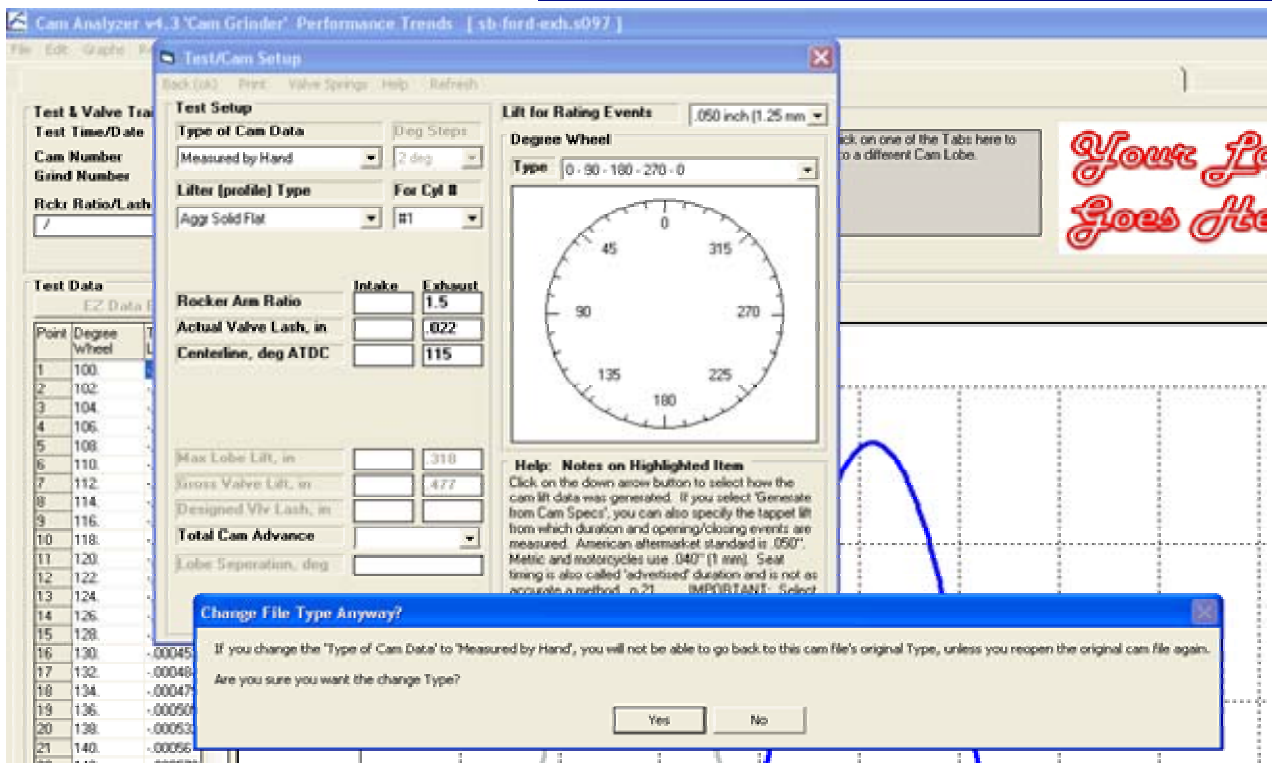
You will get a screen to let you enter some settings for this new file you will be creating, from the existing “Quick Check - Most Engines” file and this single lobe you will be importing. The screen to the right shows typical numbers.

Now, the most important thing to do is check the option “Add this lobe to the existing file” on the right side.

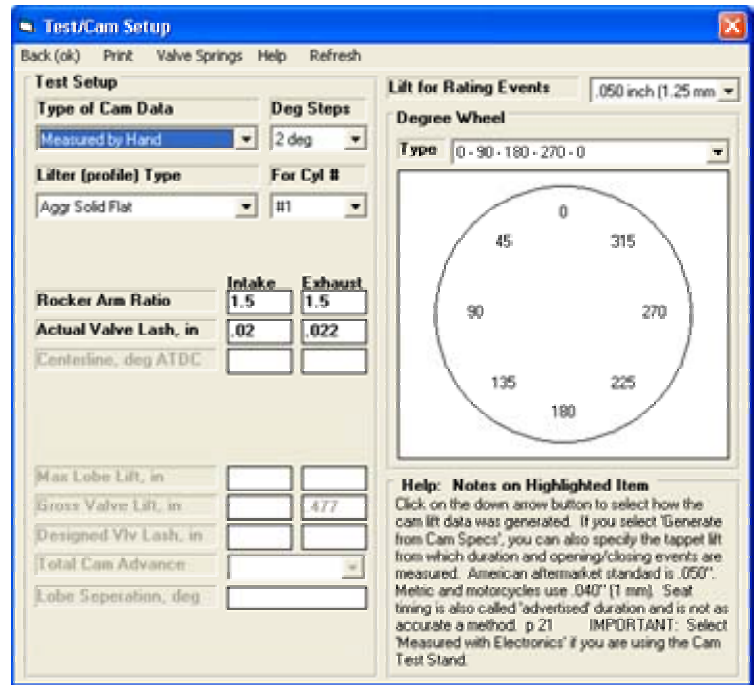


Then click on Make File to create this new file, from the existing file and this imported single lobe.

Now, clean up some details by clicking on Test/Cam Setup at the top of the screen. In the Test/Cam Setup screen, change the “Type of Cam Data” to Measured by Hand. You will get a warning, but click on Yes.



You can now also enter some settings for Rocker Ratio and Lash. Then click Back (ok) at upper left with these changes.



Here's what the file looks like, now with a smaller SB Ford Exhaust Lobe.

